

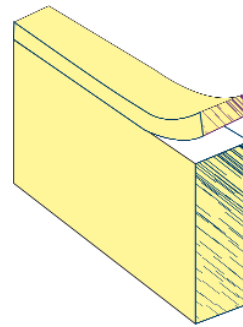
## Description

Expansionthene is a closed cell expanded polyethylene foam, supplied in sheet form or cut to slab depth/wall thickness as required. Robust, non-absorbant with excellent recoverability of 100% from 50% compression, low load transfer, non extruding and resistant to attack by most acids and alkalis.

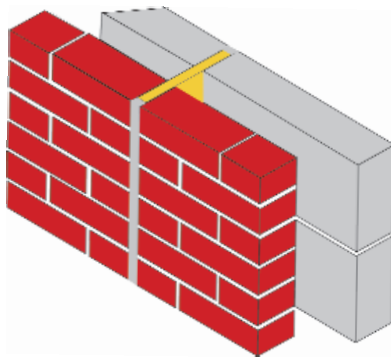
## Application

Expansionthene is used in concrete slab construction and brickwork joints and is supplied in either sheet form or standard widths pre-cut to depth of sealant for controlled void formation and easy removal.

## Expansionthene Fillerboards



Please contact our Technical department should you require further information or project specific application details



- Expansion joints in concrete slab construction
- Expansion joints in Brick/ Blockwork

### Sizes:

Thicknesses	Stock Widths
10mm	100mm
12mm	150mm
15mm	200mm
20mm	



Physical Properties	Value	Test Method
Tensile Strength	2.6 Kp/cm <sup>2</sup>	Din 53571
% Elongation	85%	Din 53571
Water absorption after 7 days	Volume %, Negligible	Din 53428
Recovery from 50% Compression	100% After immediate release	Din 53572
After 24 hours Compression	90.4%	Din 53572

### SCP CONCRETE SEALING TECHNOLOGY LTD

Crowbush Farm Business Park, Luton Road, Toddington, Beds LU5 6HU United Kingdom

Telephone: +44(0)1525 872700.

Facsimile: +44(0) 1525 871019

Email: info@scpwaterproofing.com

Web: scpwaterproofing.com