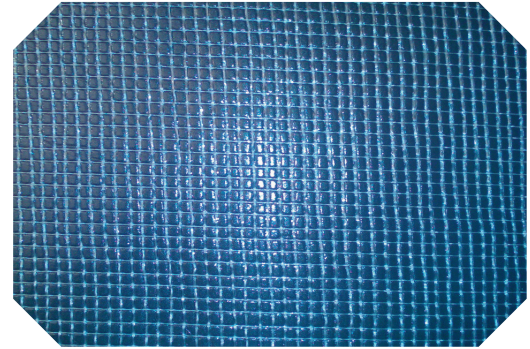


Description

Bitusheet - Glass Fibre Reinforced Protection Board is a three layer thermoplastic material, reinforced with glass fibre mesh which has been pressure formed and laminated. It is used to protect the range of Bitusheet self adhesive waterproofing membrane and other types of waterproofing membranes against damage by abrasive backfill materials and poured concrete.

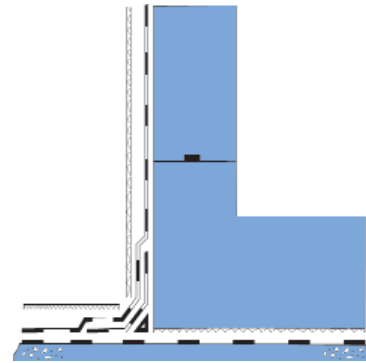
Bitusheet- Glass Fibre Reinforced Protection Board



Application

Bitusheet Reinforced Protection Board can be installed using double sided tape or SCP adhesive to fix the protection board to the membrane. Lap joints should be staggered as well as staggered over the membrane laps. Use SCP reinforced XL tape or ordinary shuttering tape depending upon the site traffic.

- Weather, warp and rot proof
- Excellent flexibility
- High puncture resistance
- Excellent resistance to chemicals
- Compatible with most waterproofing systems



Physical Properties	Value	Test Method
Standard thickness (mm)	1.2mm	EN-1849-2
Standard sheet size	2000 x 1000	2000 x 1000
Tensile Strength Longitudinal	N/50mm	EN 12311-2 Met.A
Tensile Strength Transverse	N/50mm	EN 12311-2 Met.A
Strength at Statistical Load	No perforations from loads of 20Kg	EN 12730
Impact Resistance	No perforations at h=300mm	EN 12691
Tear Strength Longitudinal	>100N	EN 12310-1
Tear Strength Transverse	>100N	EN 12310-1
Resistance to bending at low temperatures	>-20C	EN 495-5
Water Tightness	(2kPA/24h)	Watertight EN 1928

SCP CONCRETE SEALING TECHNOLOGY LTD

Crowbush Farm Business Park, Luton Road, Toddington, Beds LU5 6HU United Kingdom

Telephone: +44(0)1525 872700.

Facsimile: +44(0) 1525 871019

Email: info@scpwaterproofing.com

Web: scpwaterproofing.com